



Features

- Shell constructed with durable molded plastic
- Integrated twin scroll blower
- 4 air outlets (choice of spigot or louver)
- 3 fan speeds
- TXV included

Air Distribution and Control Panel



Suggested Applications



Recommended Condenser



KC-750

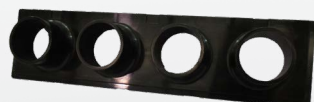
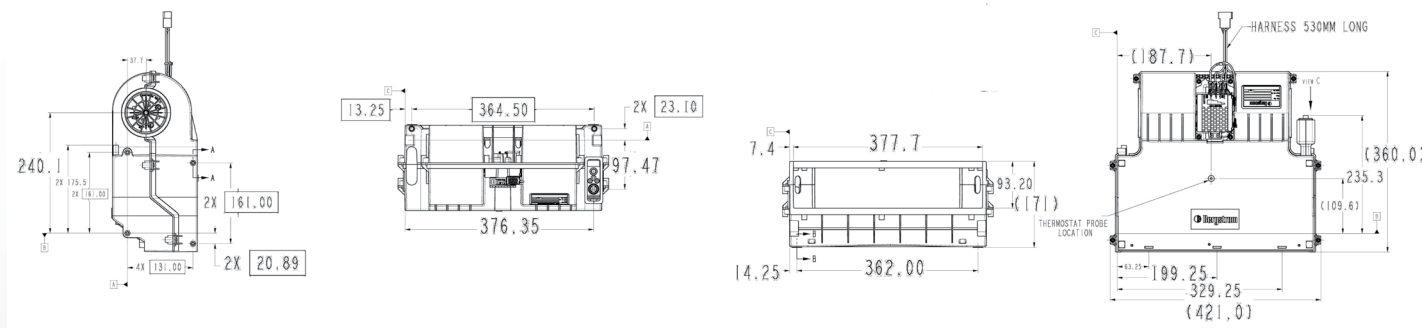
Kelvin AC Technical Specifications

Model	Kelvin AC 12V	Kelvin AC 24V
Voltage	12V	24V
Capacity	20,810 BTU/hr (6,1 kW)	20,810 BTU/hr (6,1 kW)
Amps	21.6 A/h	11 A/h
Maximum air flow	460 SCFM (780 m³/hr)	460 SCFM (780 m³/hr)
Dimensions (L x W x H)	14.71in x 16.53in x 6.69in (360mm x 421mm x 170mm)	14.71in x 16.53in x 6.69in (360mm x 421mm x 170mm)
Weight	14.3 lb (6,5 kg)	14.3 lb (6,5 kg)
Mounting Position	Horizontal (Floor or Headliner)	Horizontal (Floor or Headliner)

(\*) System output (BTU/hr) is based on system component-calculated capacities in accordance with ISO1515 standard test conditions: outside temperature 100°F (38°C), humidity 40%.

Unless otherwise stated, performance measurements are conducted in accordance with SAE J638 for heaters and IMACA 200 for evaporators.

## Line Drawing



3499048



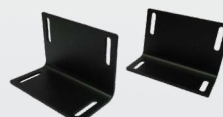
3499052



3499058



3499059



3499054

## Kelvin AC Order Guide\*

Part	Catalog / Part Number	Notes
Unit Part Number	<b>KA840-12 / 1000813037</b> <b>KA840-24 / 1000813039</b>	12V 24V
Harness	<b>3499029 / 1001404667</b> <b>3499030 / 1001397464</b> <b>3499035 / 1001405115</b> <b>3499036 / 1001405318</b>	4 meters of hose for 12V 8 meters of hose fvor 12V 4 meters of hose for 24V 8 meters of hose fvor 24V
Control Panel	<b>3499042 / 1001157329</b> <b>3499043 / 1001165354</b> <b>3499044 / 1001191534</b>	Vertical 12V Horizontal 12V Vertical 24V
Fascia Panel	<b>3499048 / 1001004175</b> <b>3499052 / 1001004181</b> <b>3499058 / 1001161239</b>	Four Spigot Outlets Four Chrome and Black Louvers Four Black and Black Louvers
Bracket	<b>3499054 / 1001013646</b> <b>3499059 / 1001015622</b>	Floor/Ceiling Mount Wall/Bulkhead Mount
Condensate Kit	<b>3499050 / 1000988616</b> <b>3499051 / 1000988618</b>	Single Side Double Side

\*Must purchase one option in each category of the order guide for proper installation.

## Kelvin AC Service Parts Guide

Part	Catalog / Part Number	Notes
Resistor	<b>2099027 / 1000067312</b>	12V / 24V
Actuator	<b>2199072 / 1000593041</b>	12V / 24V
Thermostat	<b>3499071 / 1000541645</b>	12V / 24V



When placing an order please contact your sales representative to review your order to ensure the proper system has been identified for your vehicle application.

Availability of the products shown in this catalog is subject to change without notice by Bergstrom, Inc. For the most current product information please visit the Kysor distributor website at <https://parts.shop.bergstrominc.com/>.

### Warranty

- 1-year limited warranty